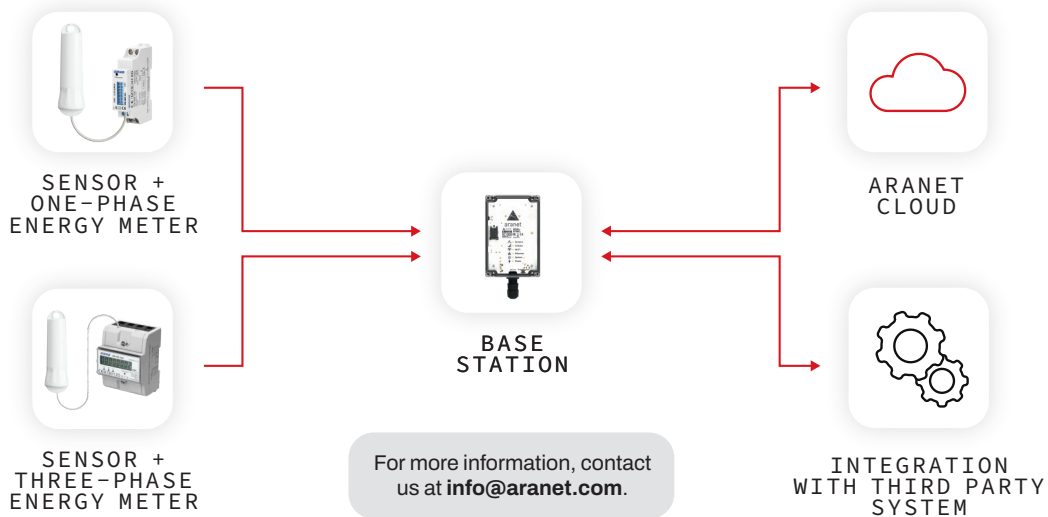


Aranet Energy Meter kit



For smart tracking & the optimization of energy consumption



An **Aranet Base Station** combined with a **Dry Contact Pulse Counter** sensor and a **one-phase** or **three-phase** energy meter allows easy tracking for the consumption of electric energy remotely and from one place.

Benefits of using Aranet



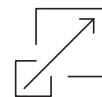
Enables energy savings based on measured data



Wireless monitoring system is easy to deploy



Centralized data collection in Aranet Cloud or base station



Scalability – grow sensor fleet with no limit.

How it works

1.

The combination of Aranet sensor & energy meter collects data and sends it to the Aranet Base Station.

2.

An Aranet base station connected to the Internet stores the data in the Aranet Cloud and is accessible from anywhere.

3.

Observe long-term energy consumption from each sensor separately.

4.

Make changes to save energy and observe the effects in the Aranet Cloud.

How to use Aranet sensor with an energy meter

Connect the sensor to the dedicated dry pulse contacts shown in the following images and the sensor is ready. To use our sensor with any other energy meter, make sure it has the dry contact output to connect it to.



Learn more on www.aranet.com or reach out directly at info@aranet.com.