



Aranet System Quick Start Guide

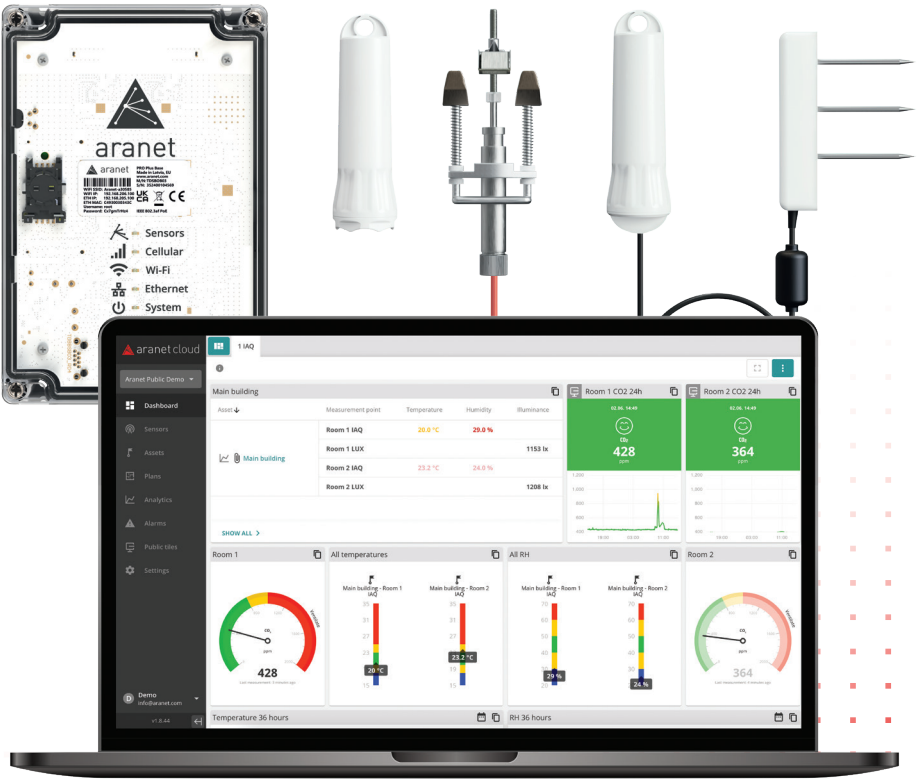


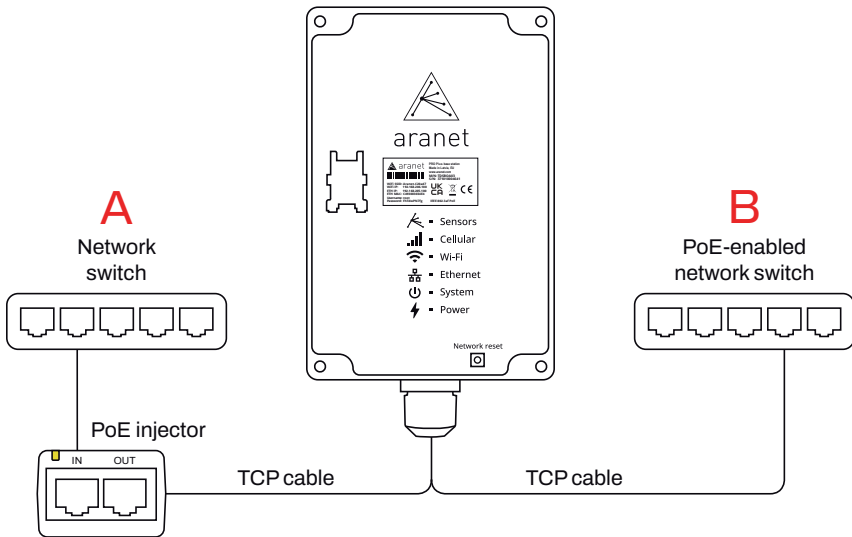
Table of Contents

Connect Base station to the internet	3.
Pairing a sensor	4.
Create Aranet Cloud account	6.
Connect Base station to the Cloud	6.
Access Cloud data outside Aranet ecosystem	7.

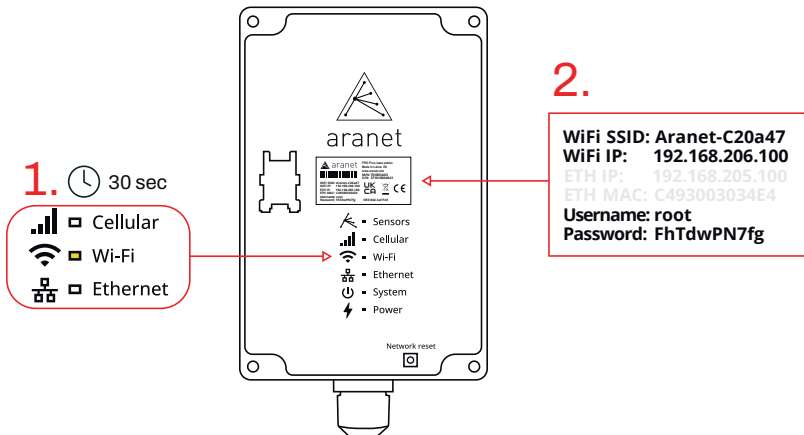
To successfully set-up the Aranet ecosystem all steps has to be followed in order provided in table of content.

Connect Base station to the internet

Unpack and plug the Base station in using **A** POE injector or **B** PoE enabled network switch.



1. In about 30 seconds, the Wi-Fi LED will turn on indicating the Base station is ready to be connected to.
2. Connect to the Base station **WiFi SSID** in your network settings by entering the password provided on the label of base station. Then type **WiFi IP** in your browser and log in with **Username & Password**.

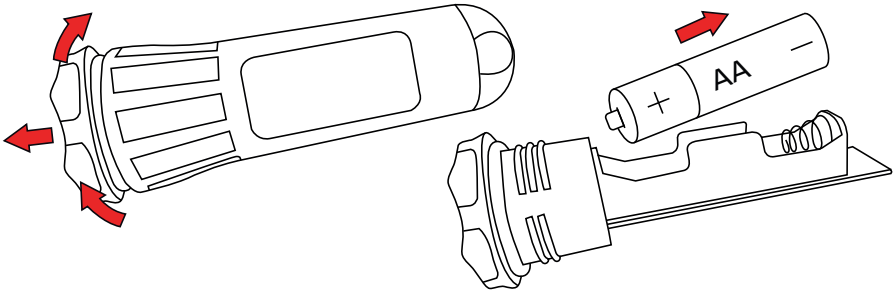


Pairing a sensor

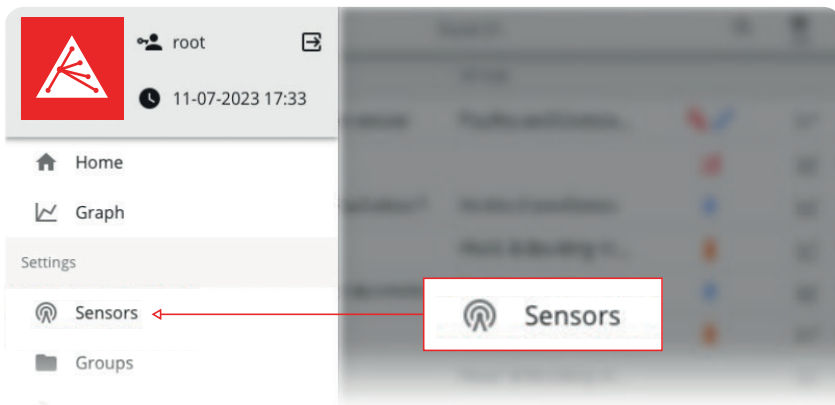
⚠ IMPORTANT – The pairing of a sensor to a Base station is done with lower transmit power – you must keep them 20 m apart at most.

The pairing procedure is as follows:

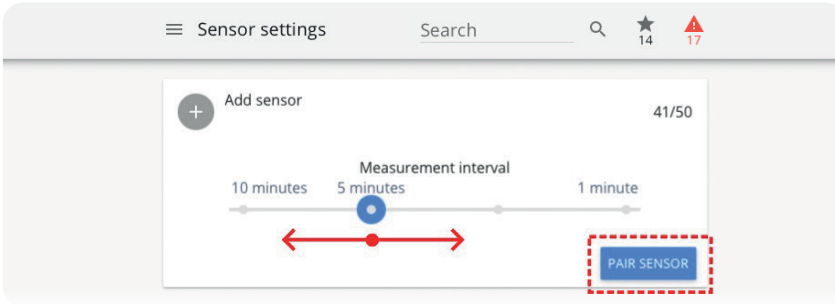
1. Open the sensor cover and remove the battery if it has been already inserted.



2. In the user interface of the base station accessed through **WiFi-IP** in a web browser, go to **Sensors**.

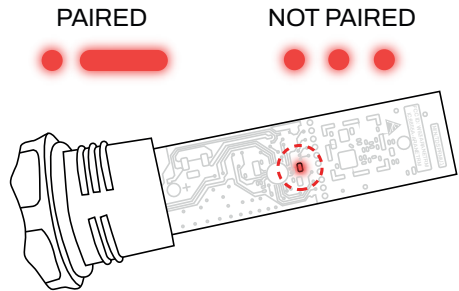
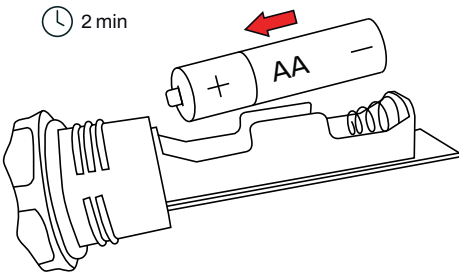


Choose the measurement interval, then click PAIR SENSOR



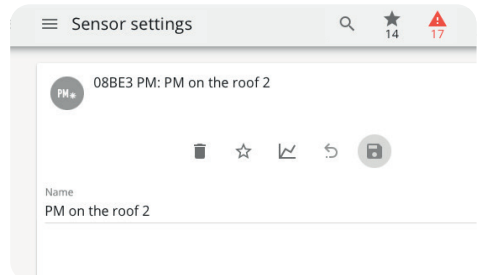
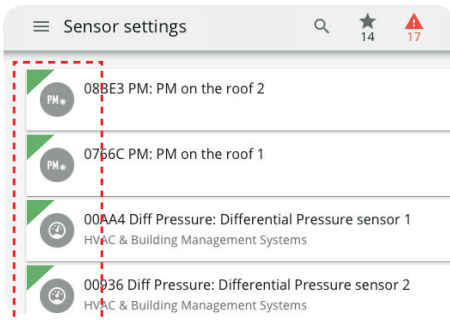
3. The 2 min timer indicates the window to insert the battery in the sensor. Correct battery type for each sensor is indicated in its datasheet.

4. Successful pairing is confirmed by one short and one long LED light flash and takes up to 30 seconds. Failed pairing is indicated by three short flashes.

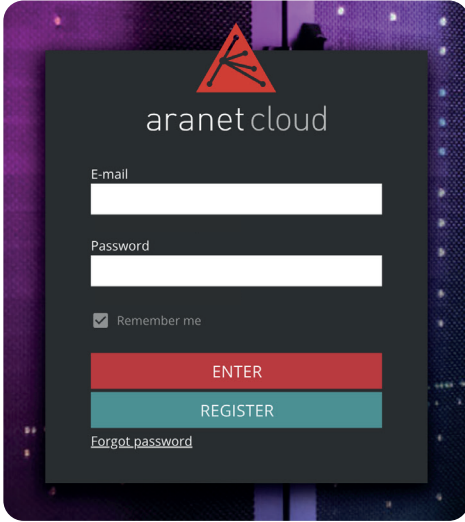


5. Newly paired sensors, marked by green triangle, are shown in the base station browser menu.

6. Attach the battery cover back on the sensor. To start customize the sensor click on the interface to STOP Pairing. Now sensor option customization is available.



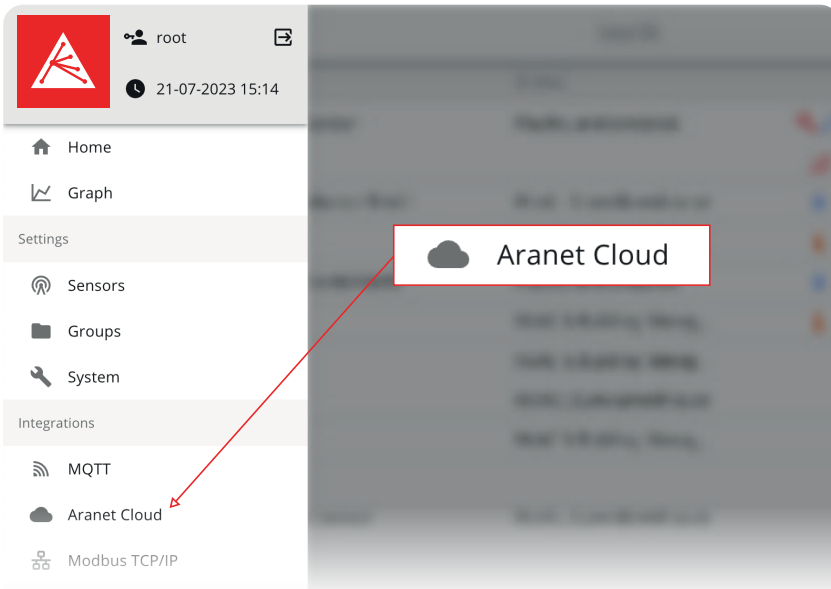
Create Aranet Cloud account



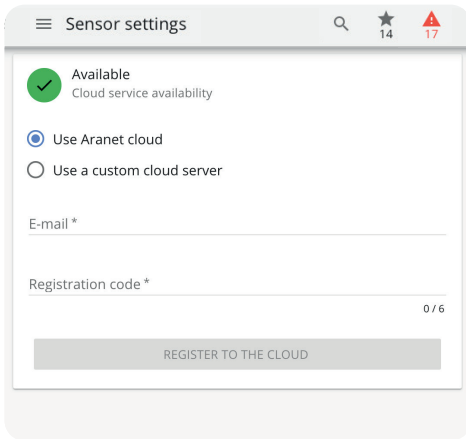
1. Go to aranet.cloud webpage and register.
2. Activate your account via link in confirmation email.
3. Log in and setup a company account and insert the billing information if needed.
4. Copy the registration code for the next step.

Connect Base station to the Cloud

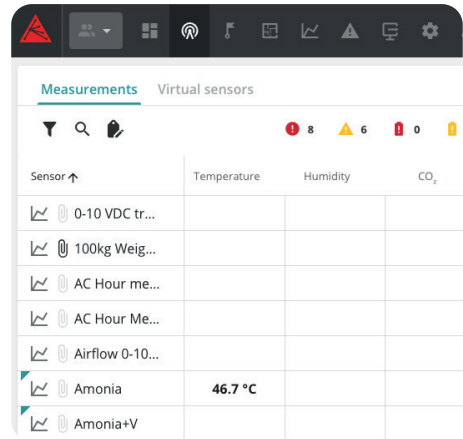
1. Connect to the Base station via browser and WiFi SSID address.
2. Go to Aranet Cloud menu in the Base station side panel.



3. Enter your email and the registration code from the previous step. Return to your Cloud account.



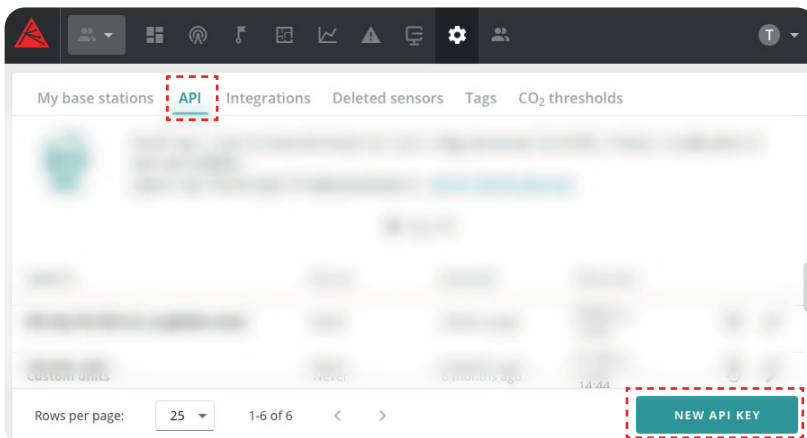
4. Within a few minutes, sensor readings will appear including the data stored in the Base station and your Aranet system is ready for use!



Access Cloud data outside Aranet ecosystem

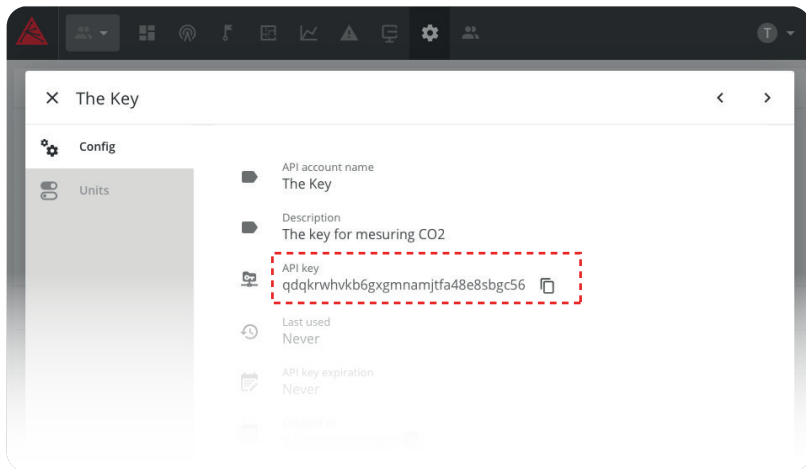
Using a Cloud API, the sensor and Cloud data can be integrated with any other web or cloud-based IT system, or 3rd party applications. To create API key:

1. Login the admin Aranet Cloud under account that has permission to edit Integrations.
2. Go to Settings and select API tab and click NEW API KEY



3. Enter API account name, description, expiration date if desirable, etc. Click CREATE

4. Click on the new key to see its details – it is now ready to be used or further edited if needed.



API key can be used in Aranet partners' software solution to take full advantage of the wireless sensing ecosystem.

See Aranet partners with whom the API key can be used:
www.aranet.com/aranet-software-partners

THE SPECIFICATIONS OR INFORMATION CONTAINED IN THIS DOCUMENT ARE SUBJECT TO CHANGE WITHOUT NOTICE DUE TO CONTINUING INTRODUCTION OF DESIGN IMPROVEMENTS. IF THERE IS ANY CONFLICT BETWEEN THIS DOCUMENT AND COMPLIANCE STATEMENTS, THE LATTER WILL SUPERSEDE THIS DOCUMENT.

FOR MORE DETAILED INFORMATION ABOUT ARANET PRODUCTS, PLEASE VISIT ARANET.COM, CONTACT YOUR ARANET REPRESENTATIVE, OR WRITE TO INFO@ARANET.COM. PRODUCT SPECIFICATIONS ARE SUBJECT TO CHANGE WITHOUT PRIOR NOTICE.

© 2017 - 2023 SAF TEHNIKA, JSC. ALL RIGHTS RESERVED.