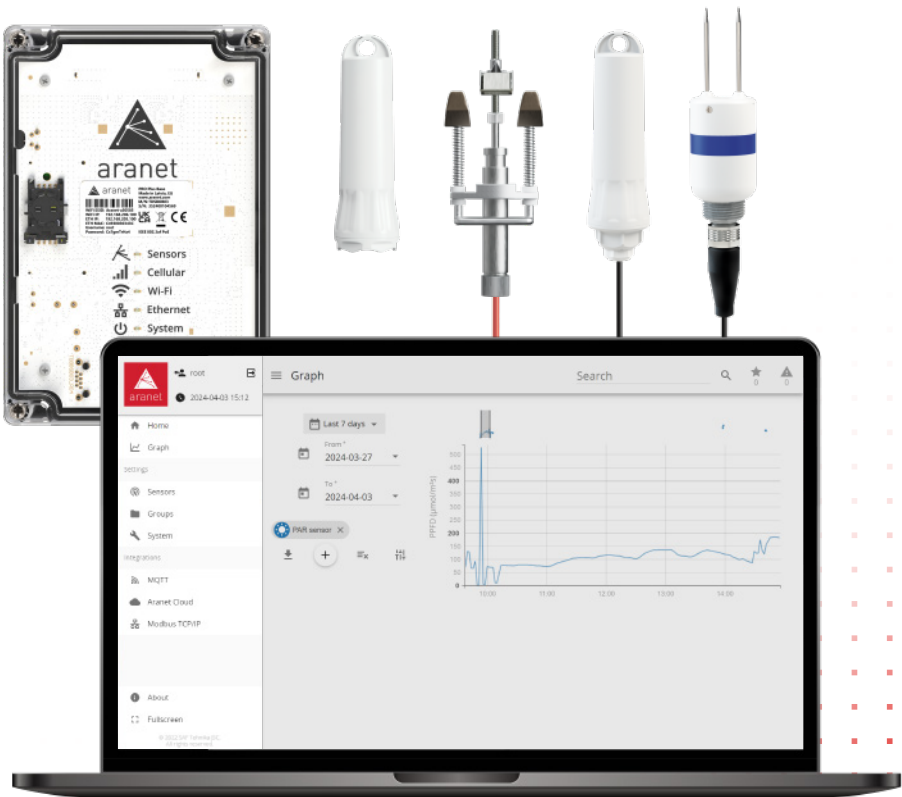




Sensor Pairing Quick Start Guide



Pairing sensors to the Aranet PRO / PRO Plus base station

Sensors can be paired one-by-one or in batches. When pairing the sensor, it should be located within 20 meters of the Aranet PRO/PRO Plus base station. Once the sensor is paired, it communicates with a base station at a much greater distance. The sensor pairing procedure is as follows:

Step. 1

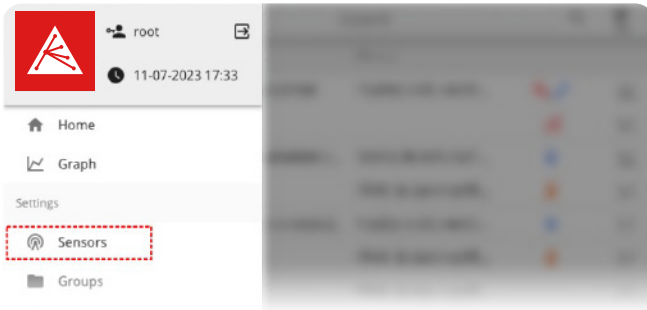
⚠ IMPORTANT If the sensor uses a power supply, unplug it before continuing the pairing procedure!

Unscrew and open the sensor cover. For box shape sensor/transmitter, release screws in the corners of the cover and remove the cover. Remove the battery if it has already been inserted. For successful pairing, the battery should be removed for at least 20 sec.



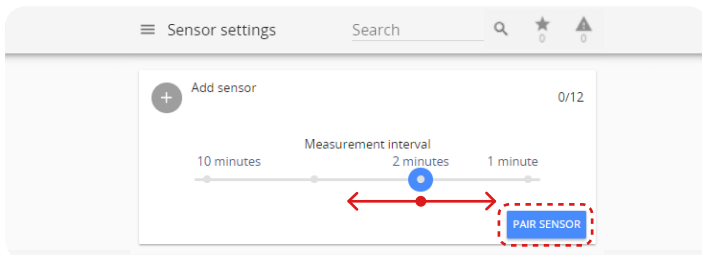
Step. 2

In the user interface of the base station go to the main menu and open Sensors menu.



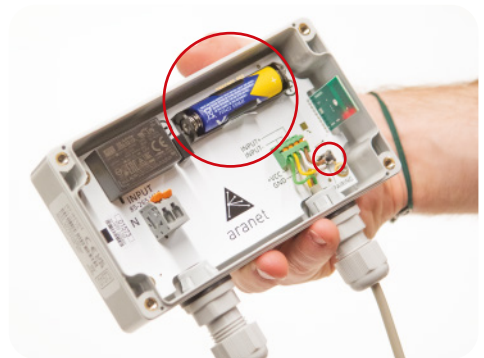
Step.3

Set the Measurement interval (10, 5, 2 or 1 min) and click “PAIR SENSOR” button to initiate pairing mode. This will initiate a "2 min timer" (refer to step 4 below).



Step.4

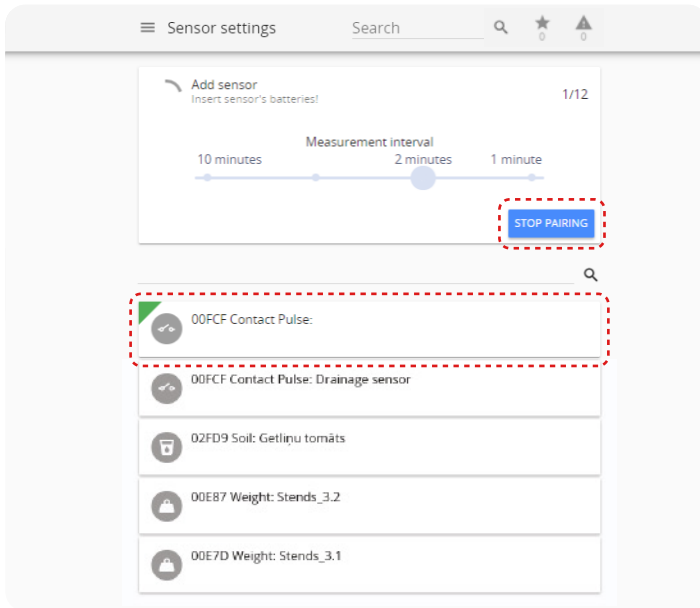
The 2-minute timer indicates the time window to insert the battery in the sensor. The correct battery type for each sensor is indicated in its datasheet.



Step. 5

Once pairing is successful, you'll see your sensor in the list – appeared with a green corner.

Feel free to add more sensors in the same 2-minute interval or click 'Stop pairing' if you're finished.



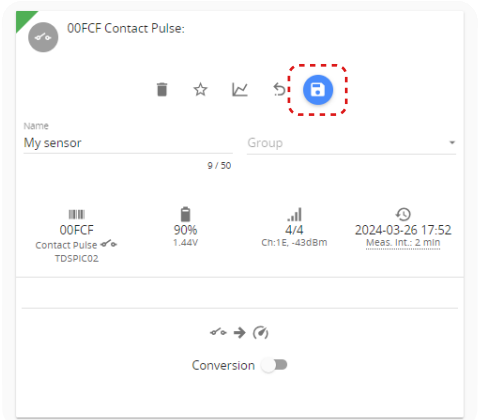
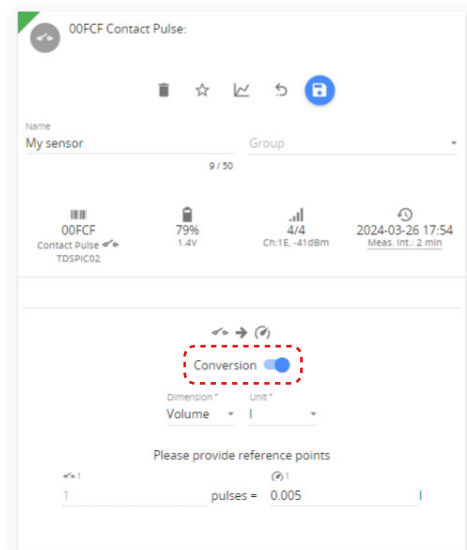
Step.6

After successful pairing, close the sensor by screwing the sensor cover back.



Step. 7

After pairing the sensors, rename and adjust settings according to your requirements. To do so, navigate to each sensor's settings, make the necessary adjustments, and then click the 'Save' button.



Step. 8

Depending on sensor specifics, enable the Conversion feature to change measurement dimensions and units. Select your dimension and unit from the drop-down menu or create a custom conversion if necessary.

Step. 9

Click the save button to save changes. That's it!

Sensors can also be paired through Aranet Cloud interface by using the **[Base station management feature](#)** in Settings.

For more details see Aranet PRO Plus/PRO Plus LTE base station **[user guide](#)**.